

Small Scale Storage of Horticultural Crops in Bangladesh

Amrita Mukherjee

Assistant Specialist – Horticulture Innovation Lab
UCDAVIS



HORTICULTURE
INNOVATION LAB

UCDAVIS
UNIVERSITY OF CALIFORNIA

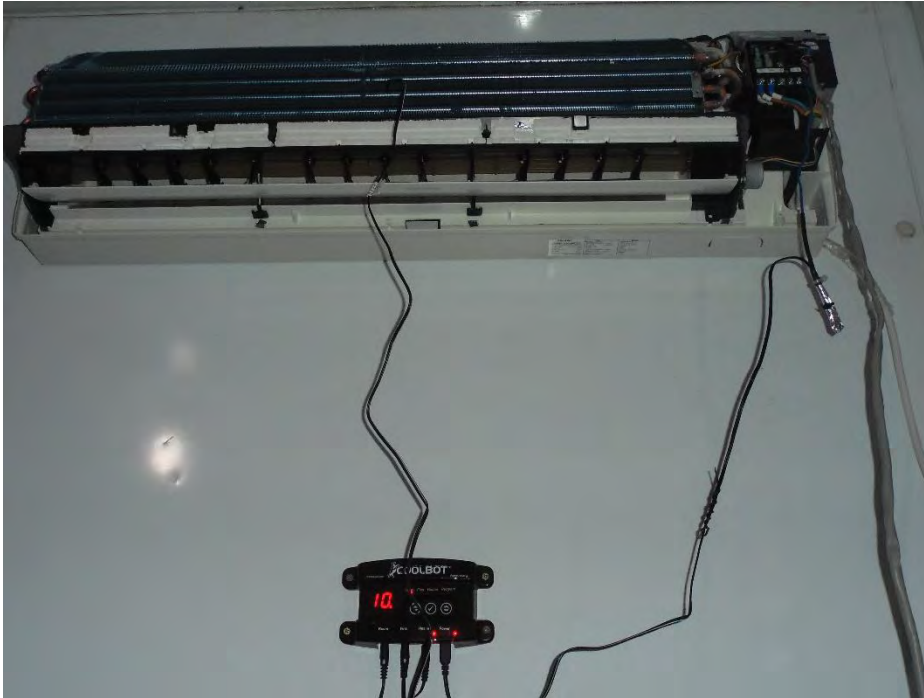
Objective



Strategy



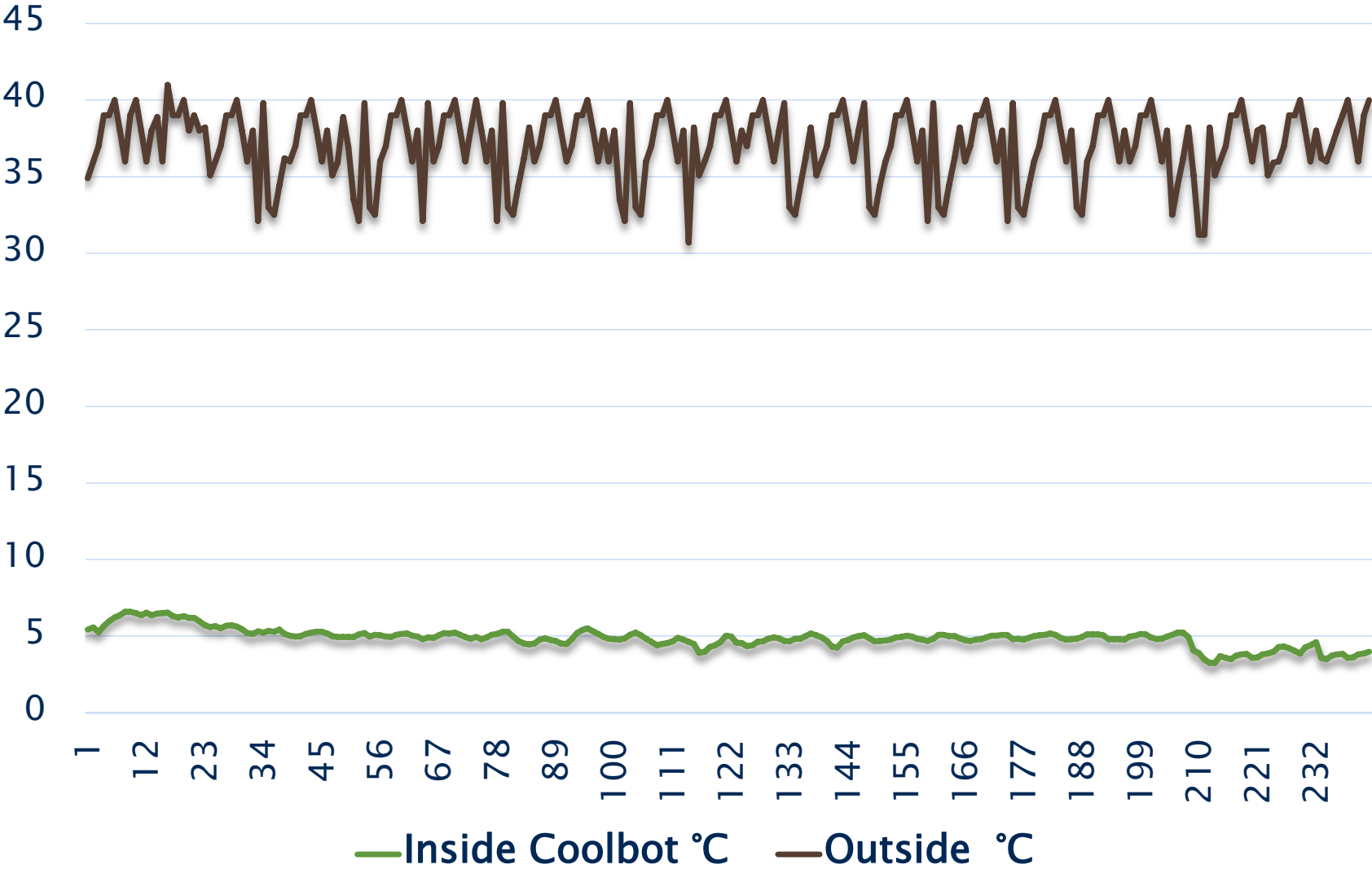
Coolbot Installation



CoolBot room construction: Jhikargacha



It works well!



Issues

Time

Cost

Electricit

y

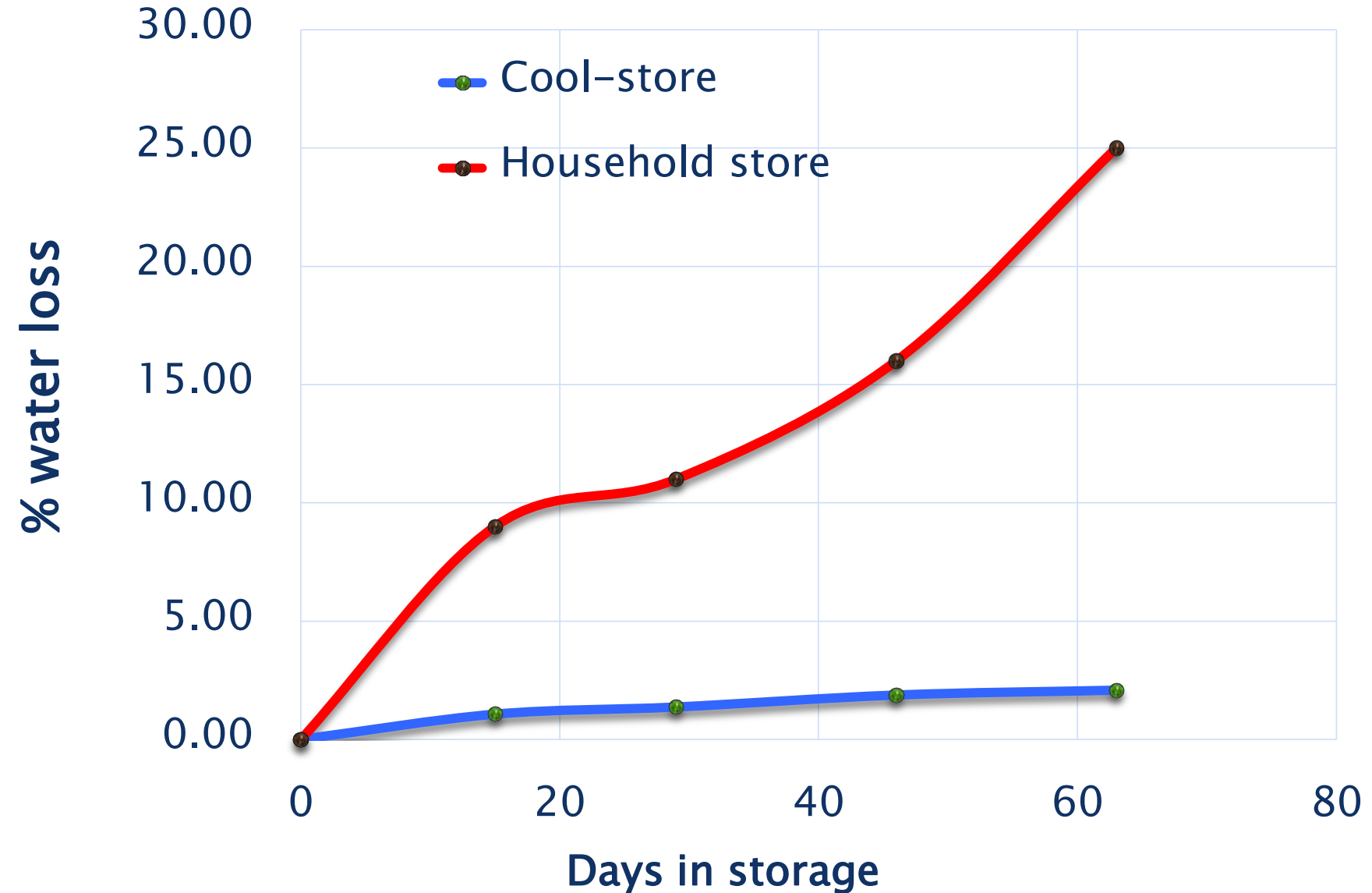
Solar power cool storage



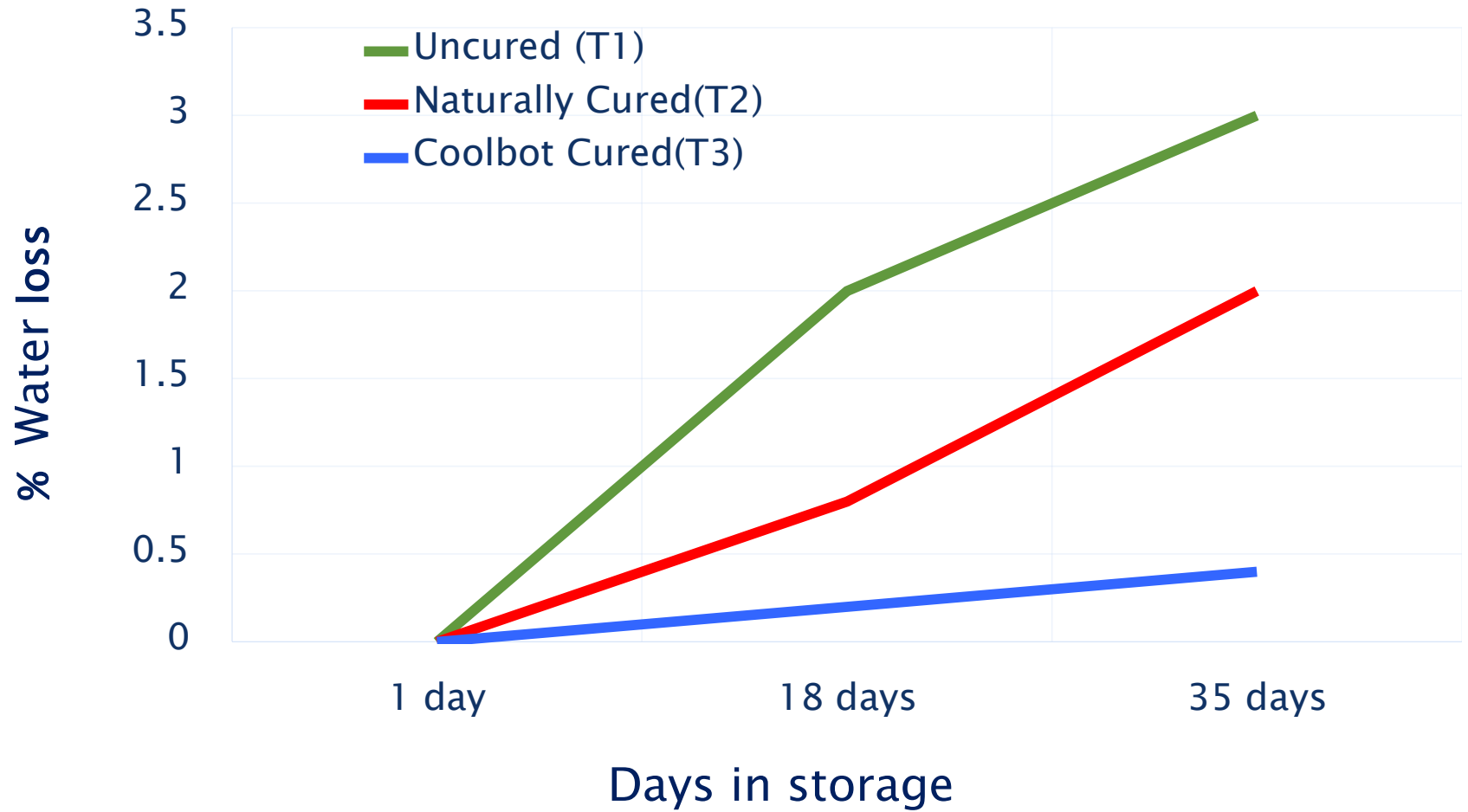
Storage experiments



Water loss during storage



Effect of curing



Potato storage

Household storage, 3 months

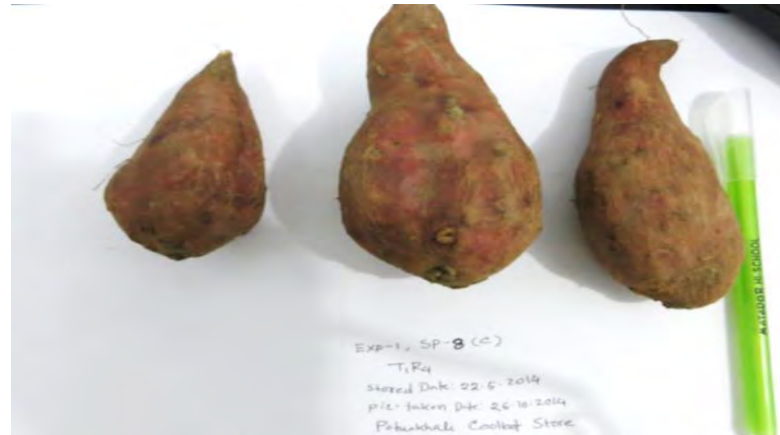


Coolbot Storage, 3 months



Sweet potato storage

- ▶ *CoolBot stored for five months*



- ▶ *Ambient Stored*



Vegetable storage

- ▶ CoolBot stored tomatoes 9 days



- ▶ Ambient stored tomatoes 9 days

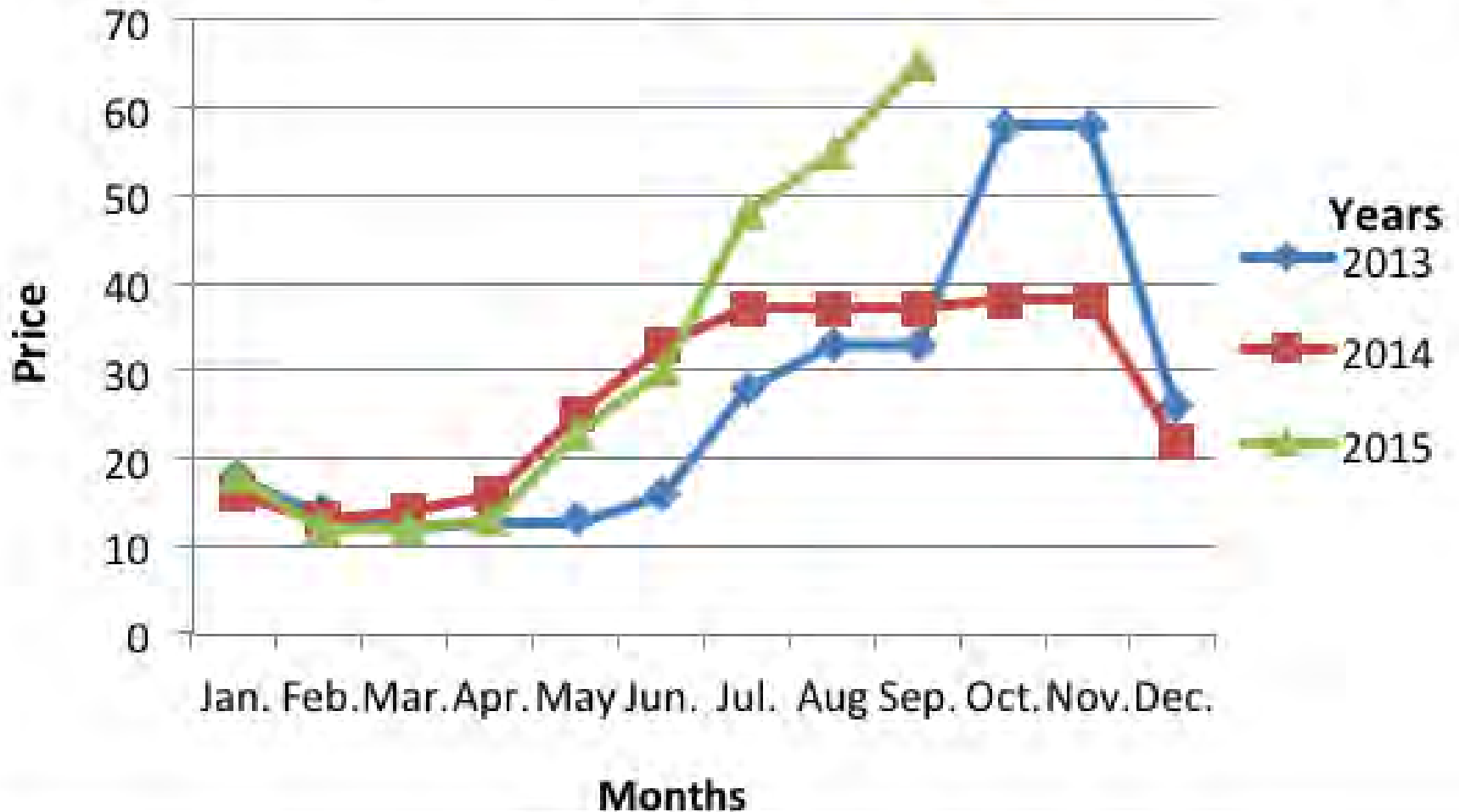


Can storage increase income?



Data sources

Carrot weekly wholesale market price(Tk.)/kg in last three years



Cost Analysis

- ▶ Capital cost – \$9500
 - \$160/month
 - 2 cents/kg/month
- ▶ Running cost – \$100/month
 - 1.25 cents/kg/month

Profit analysis

- ▶ Carrots stored for 3 months
- ▶ Gross profit 30 cents/kg
- ▶ Net profit 27 cents/kg
- ▶ *OR* \$2,160 for 8 tonnes

Storage Calendar:

Crop. Name:	Jan.	Feb.	Mar.	Apr.	May	Jun.	Jul.	Aug.	Sep.	Oct.	Nov.	Dec.
Tomato							Red	Red	Red	Red		
Cucumber							Dark Green	Dark Green	Dark Green			
Egg plant							Grey	Grey	Grey			
Bitter gourd								Dark Green	Dark Green			
Green Chili							Dark Green	Dark Green	Dark Green			
Yard Long bean								Light Green	Light Green			
Lemon/citrus			Light Green	Light Green								
Pumpkin								Light Green	Light Green			
Carrot							Olive	Olive				
Seed potato			Dark Green	Dark Green	Dark Green	Dark Green	Dark Green	Dark Green	Dark Green	Dark Green		
Ware Potato					Yellow	Yellow	Yellow					
Sweet potato						Dark Green	Dark Green	Dark Green				
Pea		Dark Grey	Dark Grey									
Mango(Fazli)							Red	Red				
Pineapple							Light Brown	Light Brown				
Litchi						Red	Red					
Jack Fruit						Dark Green	Dark Green					
Gladiolus	Blue	Blue					Blue	Blue	Blue	Blue	Blue	Blue

Questions?



HORTICULTURE
INNOVATION LAB

UCDAVIS
UNIVERSITY OF CALIFORNIA

